

 **RUSHPALA**





# ABOUT US

Our company produces Power transmission towers and their component parts from the selected pine of the first and second grade in accordance with the requirements of GOST 9463-16.

Butt-log portion is only used for production.

We treat the wooden towers with preservatives, which belong to TOC chemical group (chrome-cuprum-arsenic). towers treated with the preservative are scent-free. Besides, they have a dry and clean surface.



## ADVANTAGES

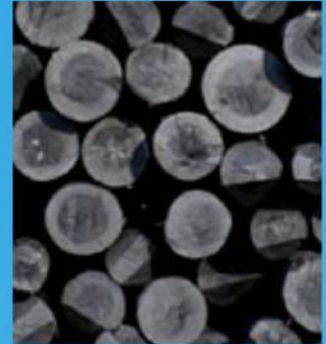
- High equipment of the enterprise;
- Double quality control;
- Own logging;
- Cooperation with trade missions in various countries of the world;
- We produce products according to GOST, EN and individual requirements of the customer;
- Optimal logistics;



## EXPORT

We export products for a long time, making direct B2B sales of our products. We studied and apply the British EN standards, we also work according to the individual requirements of the customer;

**The company can produce wooden towers impregnated with creosote.**



## ABOUT THE WOODEN POLES

The Ministry of Energy of the Russian Federation recommends the use of wooden Power transmission towers for the construction of 10-35 kW lines.

Simplicity of installation and installation of towers allows to install up to 15 pieces per day. The quantity depends on the qualification of installers.

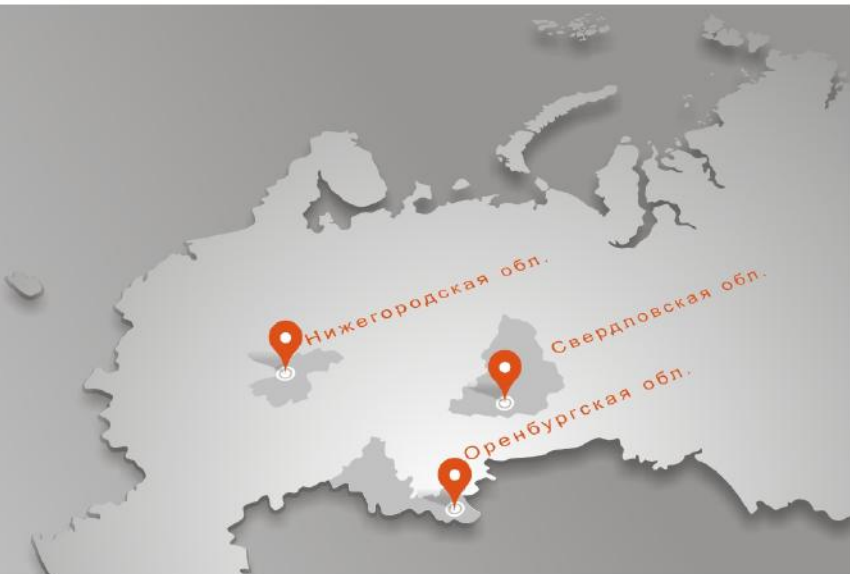
## DELIVERY



## **ADVANTAGES OF WOODEN TOWERS FOR POWER TRANSMISSION AND COMMUNICATION LINES:**

- Wooden towers are cheaper and more affordable than those made of metal and reinforced concrete;
- Operational life of wooden towers comes to decades. The minimal lifetime is for about 30 years and the average one – 50 years;
- Wooden towers are more convenient and cheaper in transporting because they weigh less than the towers from reinforced concrete. Due to this fact it is possible to save on transportation taking lease of just several cars;
- Wooden items are not exposed to abrasive erosion;
- Power transmission towers made up of the wood are modest to weather environment;
- They are humidity-resistant and tolerant to the strong wind etc.





- SLEEPERS TREATED WITH TIMBER PRESERVATIVE AGENT
- POWER TRANSMISSION TOWERS
  - TRACK TOOLS
  - TURNOUT SWITCHES



Address:  
43 Leninskogo  
Komsomola Street, office  
319, Orsk,  
Orenburg region, Russia,  
462420

Phone: +7(3537)34-05-33  
opora1@russhpala.ru  
RUSSHPALA.COM

Branch of the company  
(Nizhny Novgorod, Central  
region)  
+7(831)260-01-06  
info@russhpala-nn.ru